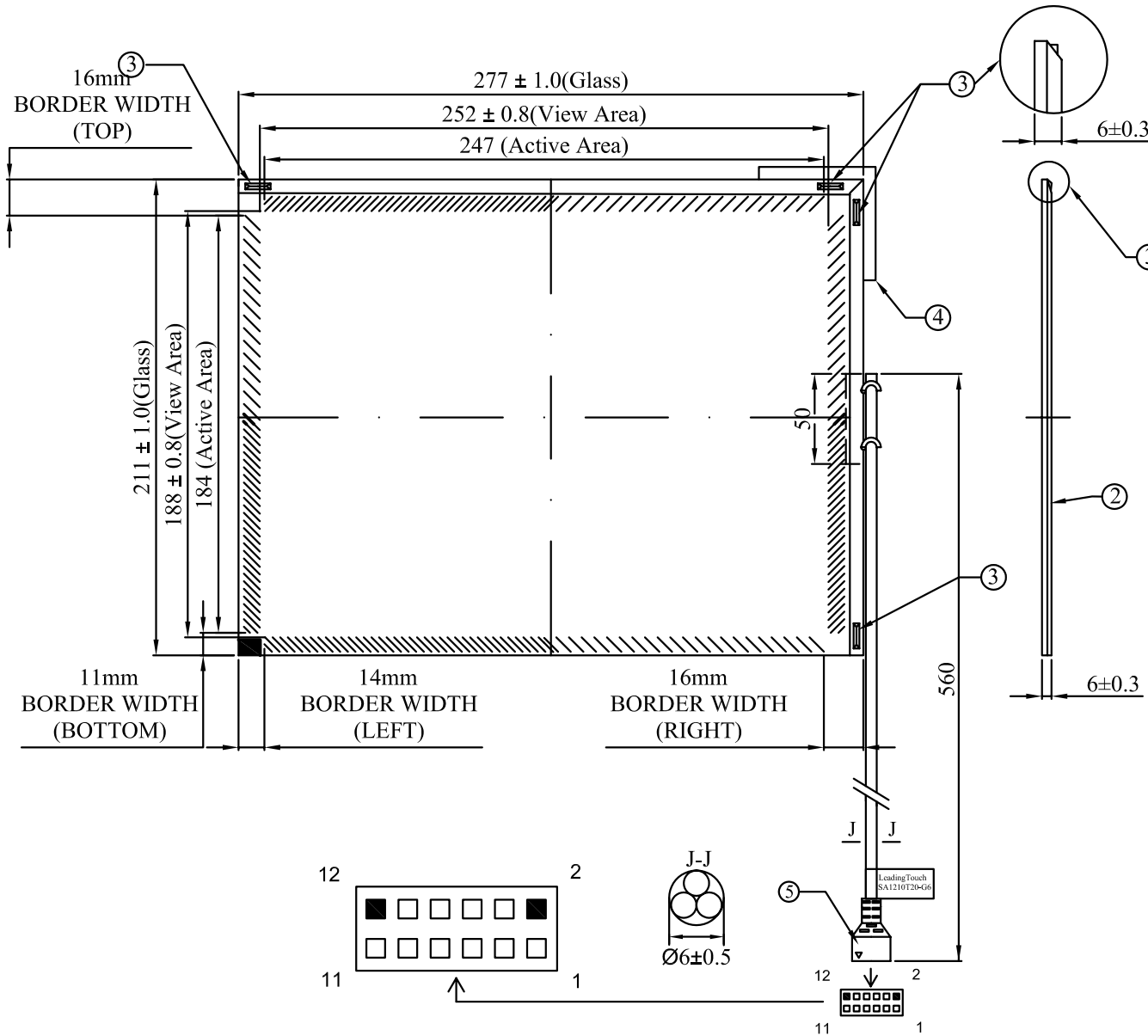


北京触点时代科技有限公司
Onetouch China Technology Co., Ltd
SA1210T20-G6



NOTES:

1. ALL DIMENSIONS ARE IN MILLIMETERS. DIMENSIONS SHOWN ARE PROJECTED DISTANCES.
- ② THE HEAT STRENGTHENED GLASS THICKNESS: 6 ± 0.3 mm NOMINAL.
- ③ TRANSDUCCERS ARE LOCATED AT THE POSITIONS SHOWN. GLASS IS BEVELED UNDER TRANSDUCCERS. HEIGHT OF TRANSDUCCERS BELOW GLASS: 1mm MAX.
- ④ CABLE ROUTING ADDS A MAXIMUM OF 2.5mm AS INDICATED ON THE SCREEN. CABLE IS ROUTED ALONG THE BEVEL.
- ⑤ LINE 14-6CX-XXX, WITH 2x6 HOUSING RECEPTACLES, CONNECT TO
 ----SAW SERIAL CONTROL BOARD SAW232(6000S)
 ----SAW USB CONTROL BOARD SAWUSB (6000U)
6. THE TOUCH ACTIVE AREA IS LESS THAN THE VIEWABLE AREA TO FACILITATE SEALING.

CONNECTION CHART			
PIN	SIGNAL	INSULATION COLOR	JACKET COLOR
1	GROUND	OVERALL SHIELD	
2	KEY		
3	Y RECEIVE+	BLU	BLK
4	Y TRANSMIT+	BLU	GRY
5	Y RECEIVE-	BLK	BLK
6	Y TRANSMIT-	YEL	GRY
7	GROUND	INNER SHIELD	
8	X TRANSMIT-	RED	RED
9	X RECEIVE-	RED	BLK
10	X TRANSMIT+	GRN	RED
11	X RECEIVE+	WHT	BLK
12	KEY		

触点
Onetouch[®]

SA1210T20-G6

DATE:2006/11/8

REV. A0