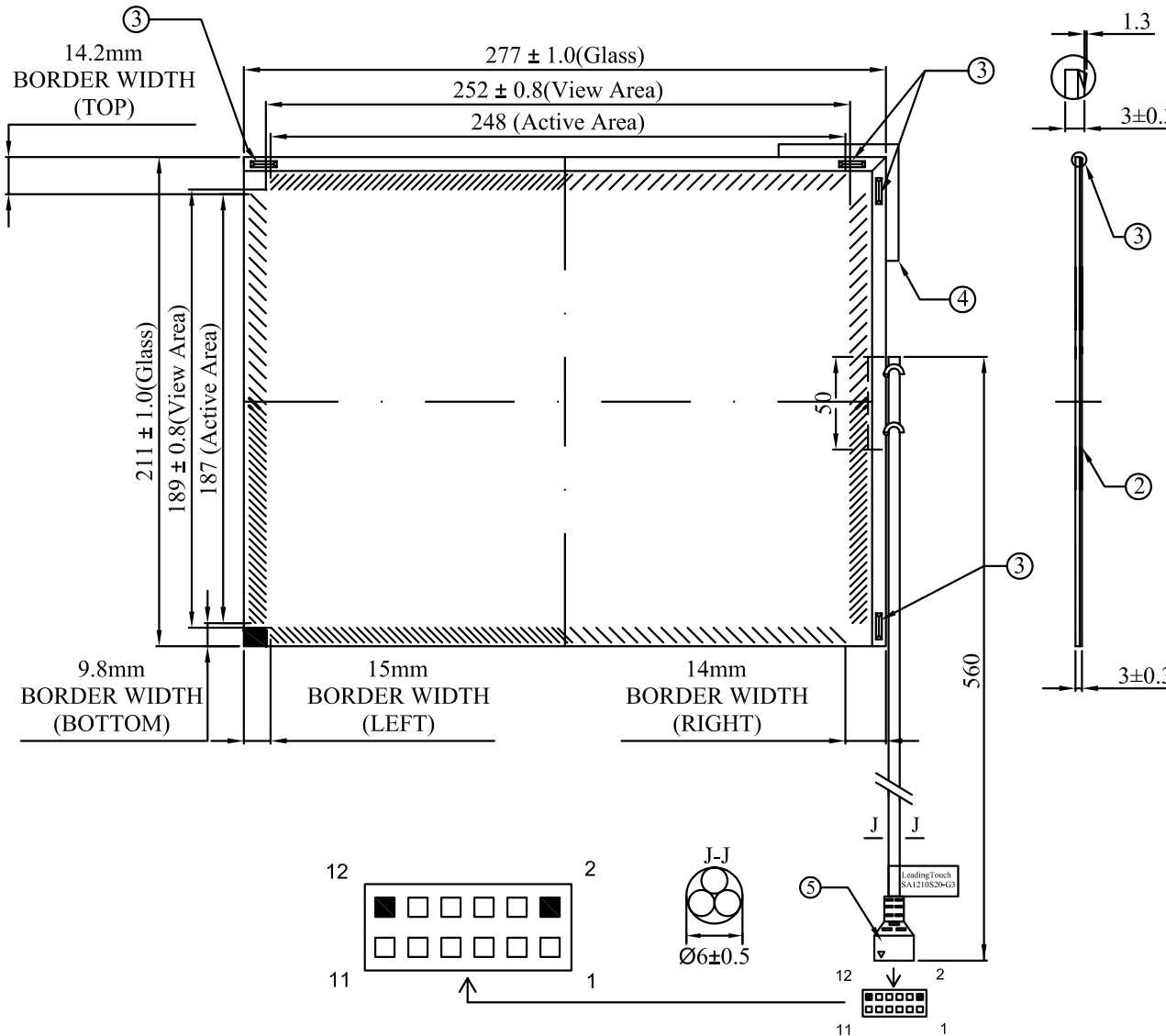


北京触点时代科技有限公司  
Onetouch China Technology Co., Ltd

SA1210S20-G3



NOTES:

- ALL DIMENSIONS ARE IN MILLIMETERS. DIMENSIONS SHOWN ARE PROJECTED DISTANCES.
- GLASS THICKNESS: 3.0mm NOMINAL.
- TRANSDUCERS ARE LOCATED AT THE POSITIONS SHOWN. GLASS IS BEVELED UNDER TRANSDUCERS. HEIGHT OF TRANSDUCERS ABOVE GLASS: 1.3mm MAXIMUM.
- CABLE ROUTING ADDS A MAXIMUM OF 2.5mm AS INDICATED ON THE SCREEN. CABLE IS ROUTED ALONG THE BEVEL.
- LINE 14-6CX-XXX, WITH 2x6 HOUSING RECEPTACLES, CONNECT TO
  - SAW SERIAL CONTROL BOARD SAW232(6000S)
  - SAW USB CONTROL BOARD SAWUSB (6000U)
- THE TOUCH ACTIVE AREA IS LESS THAN THE VIEWABLE AREA TO FACILITATE SEALING.

CONNECTION CHART			
PIN	SIGNAL	INSULATION COLOR	JACKET COLOR
1	GROUND	OVERALL SHIELD	
2	KEY		
3	Y RECEIVE+	BLU	BLK
4	Y TRANSMIT+	BLU	GRY
5	Y RECEIVE-	BLK	BLK
6	Y TRANSMIT-	YEL	GRY
7	GROUND	INNER SHIELD	
8	X TRANSMIT-	RED	RED
9	X RECEIVE-	RED	BLK
10	X TRANSMIT+	GRN	RED
11	X RECEIVE+	WHT	BLK
12	KEY		

触点  
Onetouch®

SA1210S20-G3

DATE:2006/11/8

REV. A0